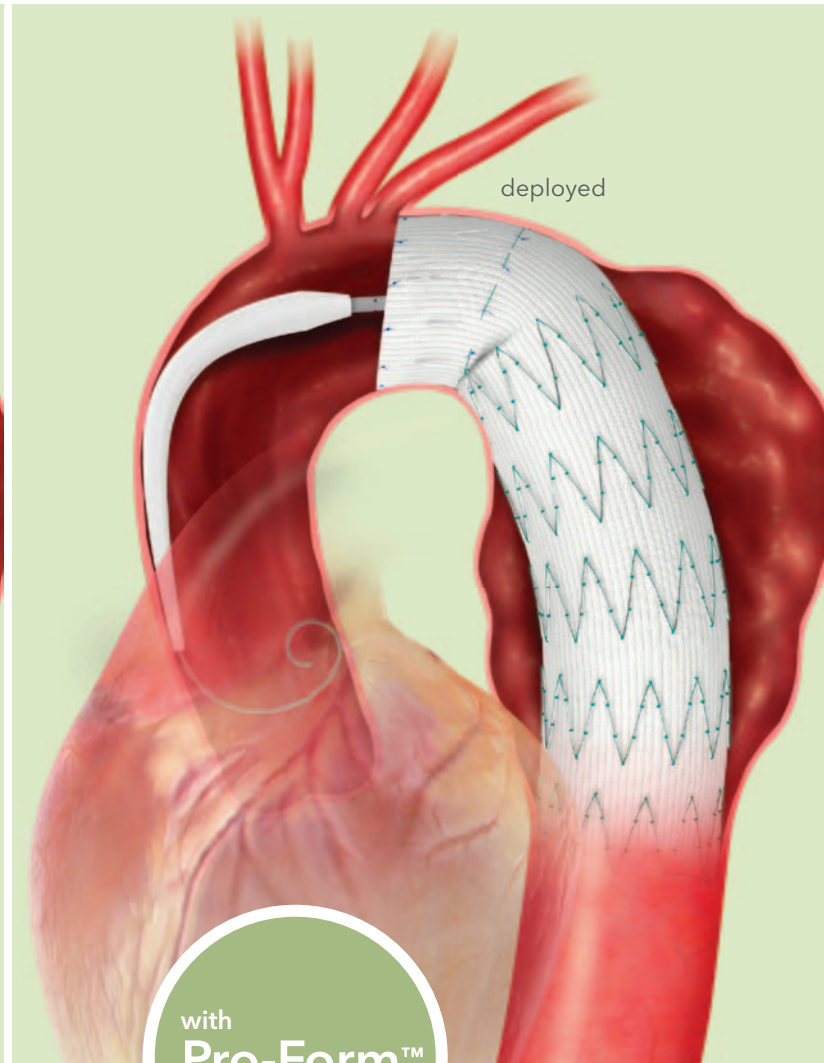
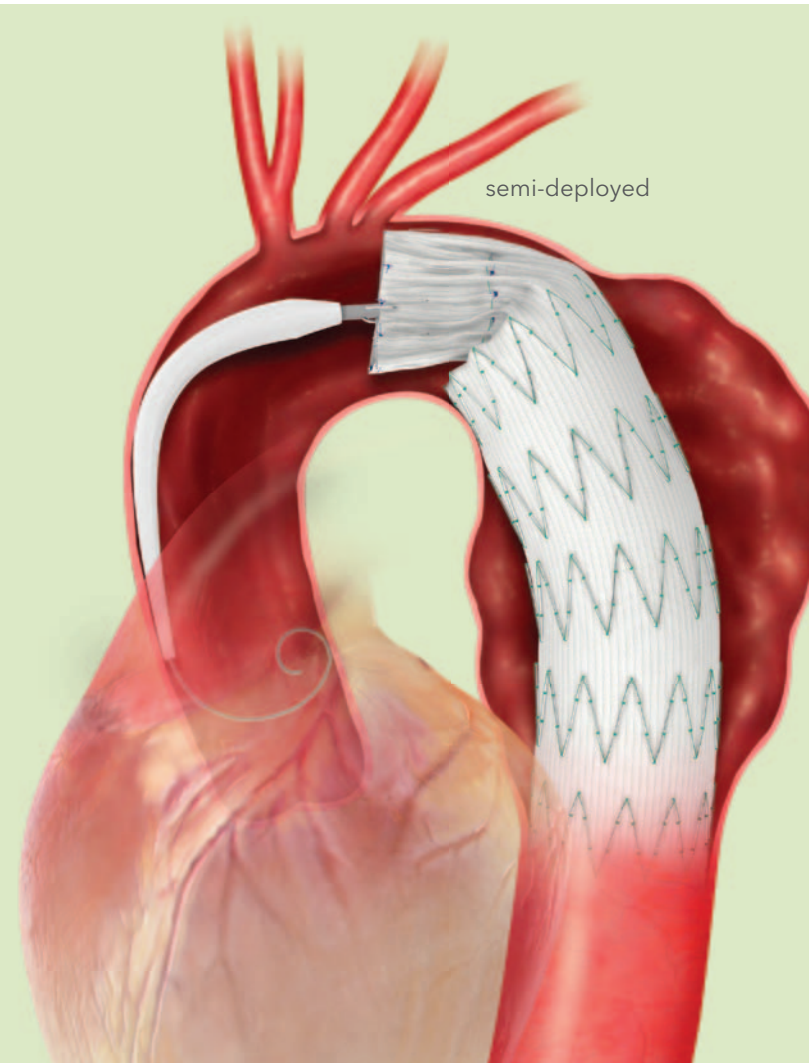




Zenith[®] TX2[®]

TAA ENDOVASCULAR GRAFT



Transcend: Control

Providing unrivaled proximal conformity and apposition.



Zenith[®] TX2[®]

TAA ENDOVASCULAR GRAFT



It's about control.

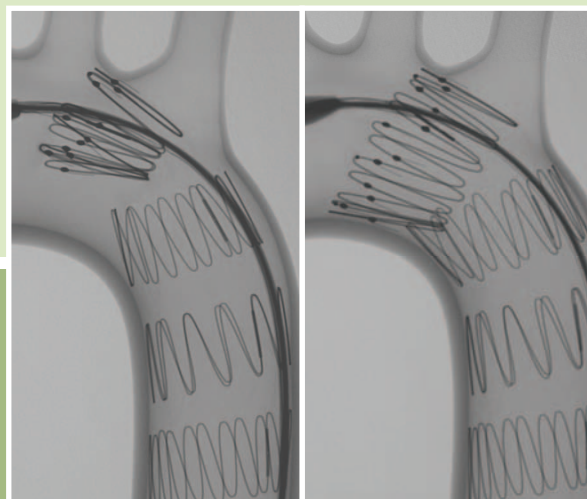
Presenting Zenith TX2 with Pro-Form—designed specifically to address the common problem of thoracic grafts struggling with proximal neck wall apposition (the “bird’s beak” effect). The end result is unrivaled control and accurate proximal conformity with the inner curvature of the aortic arch.

Going beyond. That’s what it means to Transcend. That’s the essence of Zenith.

control Orientation

The secret to TX2 with Pro-Form’s unrivaled proximal conformity and apposition is the control offered by the Z-Trak Plus™ Introduction System.

- Through deployment, trigger wires on the Z-Trak Plus hold the entire proximal sealing stent in a position **parallel to the aortic inner curvature**.
- Trigger-wire release mechanisms offer control for pinpoint deployment accuracy, even allowing for last-minute adjustments when TX2 with Pro-Form is semi-deployed.
- Proximal trifold configuration prevents the “wind sock” effect without slowing or stopping the patient’s heart.



semi-deployed

deployed



control Introduction

The Z-Trak Plus Introduction System was built for unrivaled control every step of the way. Z-Trak Plus facilitates accurate placement at your own pace.

- The kink-resistant **Flexor® Introducer Sheath** has a hydrophilic coating that enhances delivery and placement by dramatically reducing friction.
- The **Ultrathane® tip** and **inner nitinol cannula** give the Flexor sheath more flexibility and over-the-wire trackability.

control Migration

TX2 with Pro-Form continues to offer control after deployment. A combination of barbs, z-stents and durable Zenith materials provides unrivaled graft-to-vessel apposition, avoiding migration within the turbulent aortic arch.

- Proven stainless steel **anchoring barbs** are placed in a staggered configuration around the **proximal and distal** ends of the graft.

Controlled clinical trial found not a single reference to barb-related trauma.¹

- Self-expanding z-stents provide radial fixation and enable TX2 with Pro-Form to self-adjust to your patient's aortic movement.
- Strong graft material and polyester surgical sutures make up part of TX2 with Pro-Form's durable construction.

¹Matsumura JS, Cambria RP, Dake MD, et al. International controlled clinical trial of thoracic endovascular aneurysm repair with the Zenith TX2 endovascular graft: 1-year results. *J Vasc Surg.* 2008;47(2):247-257.



www.cookmedical.com

COOK MEDICAL INCORPORATED

P.O. Box 4195, Bloomington, IN 47402-4195 U.S.A.
Phone: 812.339.2235, Toll Free: 800.457.4500, Toll Free Fax: 800.554.8335

COOK (CANADA) INC.

111 Sandiford Drive, Stouffville, Ontario, L4A 7X5 CANADA
Phone: 905.640.7110, Toll Free: 800.668.0300

WILLIAM A. COOK AUSTRALIA PTY. LTD.

95 Brandl Street, Brisbane Technology Park, Eight Mile Plains
Brisbane, QLD 4113 AUSTRALIA, Phone: +61 7 3841 1188

WILLIAM COOK EUROPE ApS

Sandet 6, DK-4632, Bjaeverskov, DENMARK, Phone: +45 56 86 86 86

© COOK 2009 AI-BM-PFMP-EN-200907

AORTIC
INTERVENTION

CARDIOLOGY

CRITICAL
CARE

ENDOSCOPY

INTERVENTIONAL
RADIOLOGY

PERIPHERAL
INTERVENTION

SURGERY

UROLOGY

WOMEN'S
HEALTH