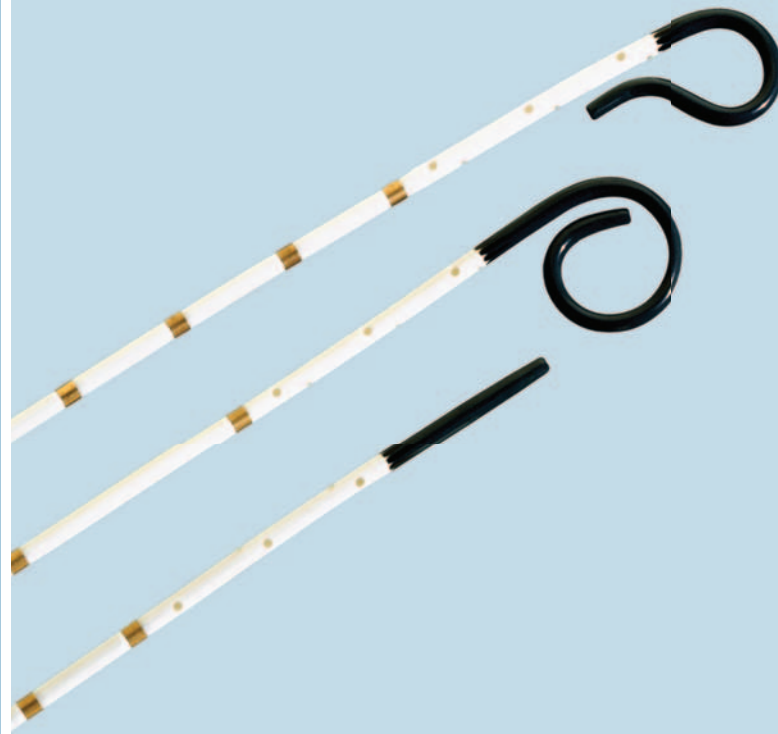




Beacon[®] Tip

SIZING CATHETERS



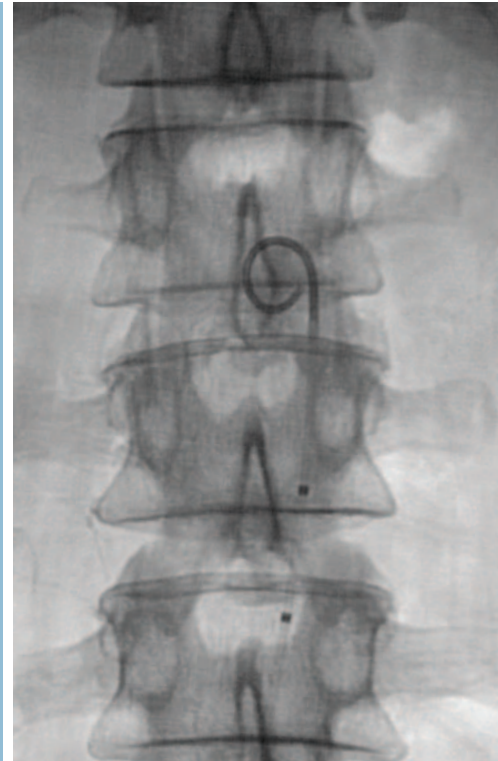
A brilliant choice.



Beacon[®] Tip

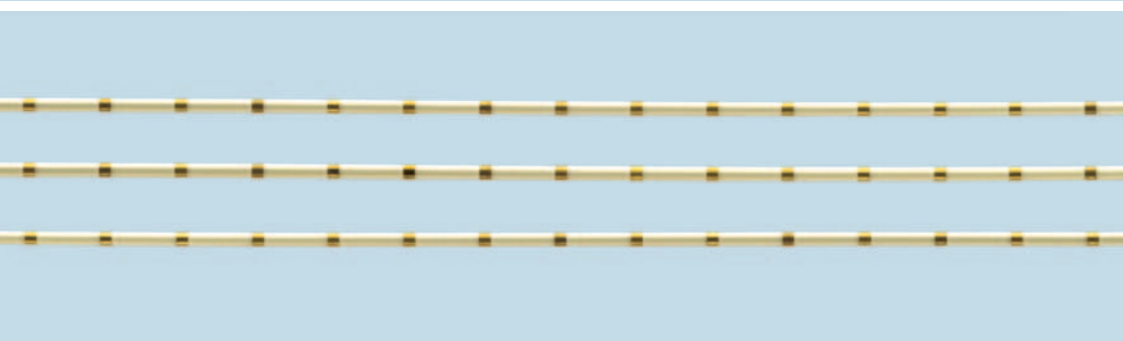
SIZING CATHETERS

All Cook sizing catheters are available with the Beacon radiopaque tip, providing vibrant visibility in the vascular system. Beacon Tip sizing catheters – a brilliant choice.



Verrill contralateral flush tip

The VCF tip configuration on Cook sizing catheters offers the ability to perform a contralateral or ipsilateral contrast injection.

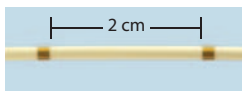


Accurate band placement intervals

Band placement comparison of three Auros[®] catheter shafts.

White Sizing Catheters

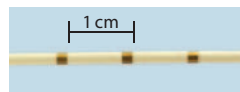
Two gold bands spaced 2 centimeters apart.



Global Product Number	Order Number	French Size	Accepts Wire Guide Diameter inch	Length cm	Sideports	Band Placement Interval cm
Pigtail						
G31224	NR5.0-35-70-P-10S-PIG-WSC	5.0	.035	70	10	2
G31226	NR5.0-35-100-P-10S-PIG-WSC	5.0	.035	100	10	2
Straight						
G31228	NR5.0-35-70-P-10S-0-WSC	5.0	.035	70	10	2
Centra-Flo™ Pigtail						
G31227	NR5.0-35-70-P-10S-CFP-WSC	5.0	.035	70	10	2
Verrill Contralateral Flush						
G31229	NR5.0-35-65-P-6S-VCF-WSC	5.0	.035	65	6	2

Aurous Centimeter Sizing Catheters

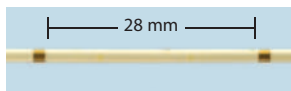
Gold bands delineate a 20-centimeter segment at 1-centimeter intervals.



Global Product Number	Order Number	French Size	Accepts Wire Guide Diameter inch	Length cm	Sideports	Band Placement Interval cm
Pigtail						
G31215	NR5.0-35-70-P-10S-PIG-CSC-20	5.0	.035	70	10	20 - 1
G31216	NR5.0-35-100-P-10S-PIG-CSC-20	5.0	.035	100	10	20 - 1
Straight						
G31213	NR5.0-35-70-P-10S-0-CSC-20	5.0	.035	70	10	20 - 1
G31214	NR5.0-35-100-P-10S-0-CSC-20	5.0	.035	100	10	20 - 1
Verrill Contralateral Flush						
G31220	NR5.0-35-70-P-10S-VCF-CSC-20	5.0	.035	70	10	20 - 1
G31221	NR5.0-35-100-P-10S-VCF-CSC-20	5.0	.035	100	10	20 - 1

Cava Sizing Catheters

Two gold bands spaced 28 millimeters apart.



Global Product Number	Order Number	French Size	Accepts Wire Guide Diameter inch	Length cm	Sideports	Band Placement Interval mm
Pigtail						
G31230	NR5.0-35-70-P-10S-PIG-CAVA	5.0	.035	70	10	28
G31231	NR5.0-35-90-P-10S-PIG-CAVA	5.0	.035	90	10	28
Verrill Contralateral Flush						
G31232	NR5.0-35-70-P-10S-VCF-CAVA	5.0	.035	70	10	28
G31233	NR5.0-35-90-P-10S-VCF-CAVA	5.0	.035	90	10	28



www.cookmedical.com

COOK MEDICAL INCORPORATED
P.O. Box 4195, Bloomington, IN 47402-4195 U.S.A.
Phone: 812.339.2235, Toll Free: 800.457.4500, Toll Free Fax: 800.554.8335

COOK (CANADA) INC.
111 Sandiford Drive, Stouffville, Ontario, L4A 7X5 CANADA
Phone: 905.640.7110, Toll Free: 800.668.0300

WILLIAM A. COOK AUSTRALIA PTY. LTD.
Brisbane Technology Park, 12 Electronics Street, Eight Mile Plains
Brisbane, QLD 4113 AUSTRALIA, Phone: +61 7 38 41 11 88

WILLIAM COOK EUROPE ApS
Sandet 6, DK-4632, Bjaeverskov, DENMARK, Phone: +45 56 86 86 86

© COOK 2007 PI-BM-PFVS-EN-200711