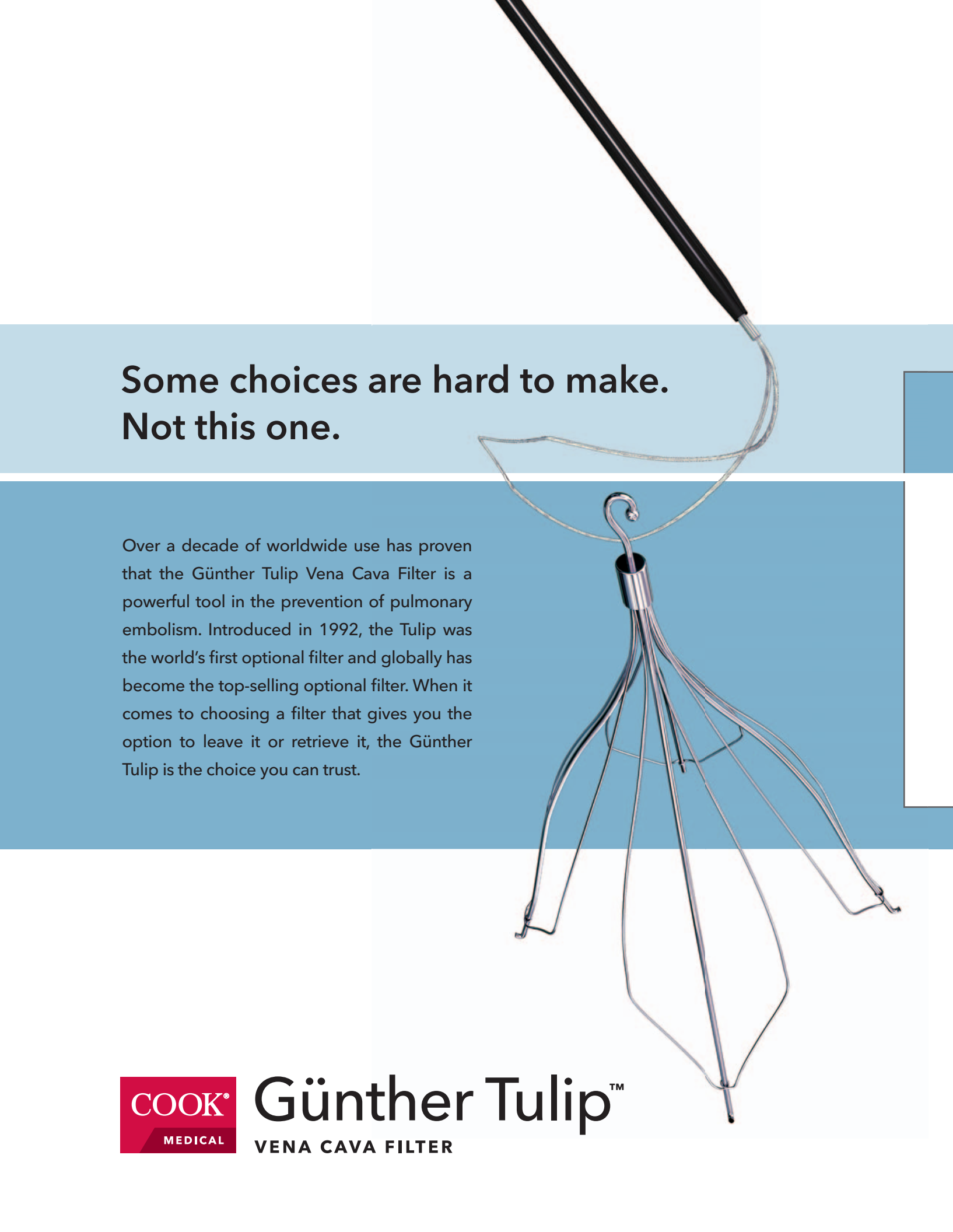




Günther Tulip™

VENA CAVA FILTER

The most trusted
optional filter in the world.



**Some choices are hard to make.
Not this one.**

Over a decade of worldwide use has proven that the Günther Tulip Vena Cava Filter is a powerful tool in the prevention of pulmonary embolism. Introduced in 1992, the Tulip was the world's first optional filter and globally has become the top-selling optional filter. When it comes to choosing a filter that gives you the option to leave it or retrieve it, the Günther Tulip is the choice you can trust.



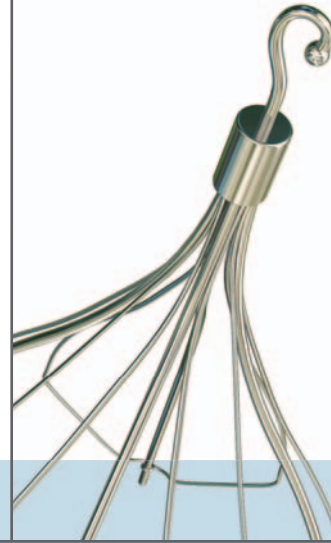
Günther Tulip™
VENA CAVA FILTER



PROVEN DESIGN

The Tulip employs proven design principles for caval filtration.

- Conical shape efficiently captures clots¹ with minimal blood flow disruption
- 12 filter wires for effective clot trapping
- Bio-compatible conichrome construction, strong and durable
- Controlled delivery system for accurate filter placement

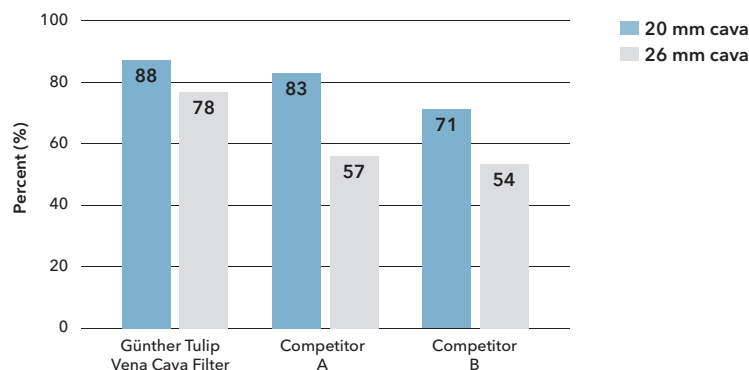


RETRIEVABILITY

Designed as a permanent filter with the option to retrieve, the Tulip functions well as both a permanent vena cava filter or as a retrievable device.

- Tulip's unique hook enables accurate jugular placement and makes it easy to retrieve
- Simple retrieval approach—simply snare and re-sheath
- The Tulip Retrieval Registry showed a 94% retrieval success rate through 12 weeks²

Effectiveness of Trapping Clots



1. Xian ZY, Roy S, Hosaka J, et al. Multiple emboli and filter function: an in vitro comparison of three vena cava filters. *J Vasc Interv Radiol.* 1995;6(6):887-893.

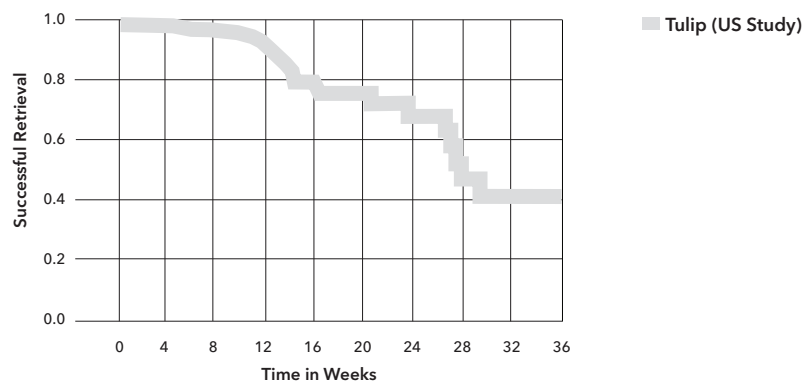


SAFETY

When it comes to PE protection, the Tulip was designed with safety in mind.

- Barbed feet are specially designed at a 55° angle and specific length to achieve strong caval fixation
- Ball at end of hook protects caval wall
- Safely scan patients in MR scanners up to 3.0 Tesla immediately after placement (MR Conditional - see IFU for details)

Tulip Retrieval Rate (Kaplan-Meier Analysis)²



2. Smouse, HB. Preliminary results of the Günther Tulip retrieval registry. Presented at: ISET; 2008; Hollywood, FL.

Temporary or permanent, the Tulip puts the choice in your hands. It is safe and effective as a permanent filter, but if the patient's risk of pulmonary embolism (PE) diminishes, the Tulip can be easily retrieved.



www.cookmedical.com

COOK MEDICAL INCORPORATED

P.O. Box 4195, Bloomington, IN 47402-4195 U.S.A.
Phone: 812.339.2235, Toll Free: 800.457.4500, Toll Free Fax: 800.554.8335

COOK (CANADA) INC.

111 Sandiford Drive, Stouffville, Ontario, L4A 7X5 CANADA
Phone: 905.640.7110, Toll Free: 800.668.0300

WILLIAM A. COOK AUSTRALIA PTY. LTD.

Brisbane Technology Park, 12 Electronics Street, Eight Mile Plains
Brisbane, QLD 4113 AUSTRALIA, Phone: +61 7 38 41 11 88

WILLIAM COOK EUROPE ApS

Sandet 6, DK-4632, Bjaeverskov, DENMARK, Phone: +45 56 86 86 86

© COOK 2008

PI-BM-GTVCFTF-EN-200808

AORTIC INTERVENTION

CARDIOLOGY

CRITICAL CARE

ENDOSCOPY

PERIPHERAL INTERVENTION

SURGERY

UROLOGY

WOMEN'S HEALTH